

# TIVOLI

MARINA VILAMOURA

ALGARVE  
RESORT



## A SUPERLATIVE RESORT EXPERIENCE IN THE HEART OF THE ALGARVE

Unlock the best of the region with bright airy accommodation, striking harbour views and unparalleled access to the beach and golf courses.

**Tivoli Marina Vilamoura Algarve Resort**

Apartado 65 Marina Vilamoura,  
8125-901 Vilamoura, Portugal  
T. (+351) 289 303 303 F. (+351) 289 303 345  
E: [reservations.portugal@tivolihotels.com](mailto:reservations.portugal@tivolihotels.com)  
[www.tivolihotels.com](http://www.tivolihotels.com)

TIVOLI  
HOTELS & RESORTS

DISCOVERY 

# TIVOLI MARINA VILAMOURA

Tivoli Marina Vilamoura Algarve Resort is far more than a five-star hotel. Sophisticated and savvy, it sets the tone for contemporary coastal holidays in Vilamoura, a central part of the Algarve known for scenic beauty and abundant golf greens. Located next to the harbour, the resort is a gateway to oceanic adventures at Ria Formosa Natural Park, replete with picturesque fishing communities and diverse marine flora and fauna.

Extensive leisure facilities, family-friendly services and smartly appointed rooms ensure relaxing getaways for every type of traveller. Revel in the laidback chic of our beach club Purobeach, indoor and outdoor swimming pools or enjoy holistic pampering at Tivoli Spa. Wining and dining is eclectic and indulgent, from juicy cuts at Pepper's Steakhouse to fresh pasta at Oregano and Sidebar's signature cocktails.



## Location

Tivoli Marina Vilamoura Algarve Resort is situated next to Vilamoura Marina with direct access to the beach. It is just a 25-minute drive from Faro International Airport.

**GPS: N 37°04'25.80" W 08°07'12.91"**



## Accommodation

**383 rooms with private balconies, ocean and marina views including:**

1 Presidential Suite with View	10 Junior Suite	39 Premium Room Marina View
2 Junior Suite Purobeach with View	18 family Room with View	40 Deluxe Room with Sea View
2 Family Junior	19 Premium Purobeach with Sea View	50 Deluxe Room Marina View
2 Vilamoura Suite with Sea View	22 Premium Purobeach Marina View	66 Deluxe Room Marina View
4 Junior Suite with Sea View	36 Premium Room with Sea View	72 Superior Room Marina View



## Superior Room Marina View

Rejoice with stunning Marina views and sophisticated comfort. Including around 30 sqm area, these rooms are located within floors 1 to 6 in the hotel wing. They have double or twin beds and a fully equipped bathroom with shower bathtub. Guests also have access to a safe and WIFI.



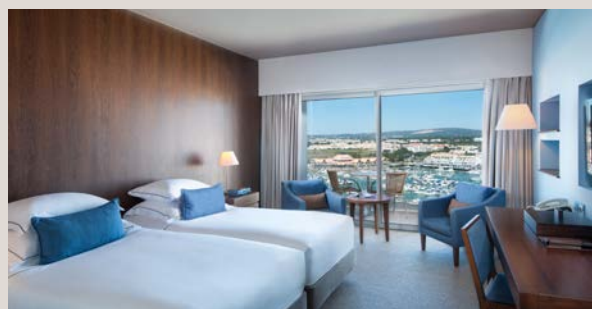
## Superior Room With Sea View

Enjoy memorable holidays with breathtaking Atlantic views. With an area of around 31 sqm, these rooms are located from floors 1 to 6 in the hotel wing. They have a double or twin beds and a fully equipped bathroom with shower or bathtub. Guests also have access to a safe and WIFI.



## Deluxe Room Marina View

These rooms have a balcony with views of Vilamoura Marina. With an area of around 31 sqm, they are located from floors 1 to 6 in the hotel wing. They have double or twin beds, two individual sofas and a fully equipped bathroom with shower or bathtub. Guests also have access to a free safe and free WIFI.



## Deluxe Room With Sea View

These rooms have a balcony with sea view. With an area of around 31 sqm, they are located from floors 1 to 6 in the hotel wing. They have a double or twin beds, two individual sofas and a fully equipped bathroom with shower or bathtub. Guests also have access to a free safe and free WIFI.



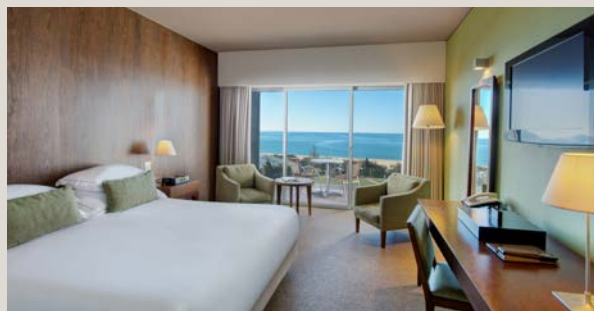
## Premium Room Marina View

These rooms include Nespresso coffee machine and soft drinks in the minibar (replaced daily), Internet, check-in and check-out and 10% off Tivoli Spa treatments. Located on floors 8 and 9 of the hotel, they present an area of around 31 sqm. These rooms are composed of double or twin beds, balconies with views of Vilamoura Marina and a fully equipped bathroom.



## Premium Room With Sea View

These rooms include Nespresso coffee machine and soft drinks in the minibar (replaced daily), Internet, priority check-in and check-out and 10% off Tivoli Spa treatments. Located on floors 8 and 9 of the hotel, they have an area of around 31 sqm. These rooms have a double or twin beds, balconies with sea views and a fully equipped bathroom.



## Family Room With View

These spacious rooms with an area of 49 sqm, possess a double bed and sofa-bed that accommodates 2 guests on individual bedding. With views of the sea or Vilamoura Marina, they are located on the 1st floor and have an exclusive deck with a lounge area - table, sofas and sunshade.



## Premium Purobeach Marina View

Soak up more sunrays and exclusive privileges with the new Premium Purobeach Marina View, featuring daily access to the beach club or Purobeach Poolside (Adults only) between April and October. Enjoy a sun lounger by the pool or on the sand all day long, with special privileges such as a parasol at Purobeach Vilamoura, flip-flops and a welcome drink. Watch sundown from the Purobeach dance floor or the privacy of your room's balcony with stunning views over the marina.



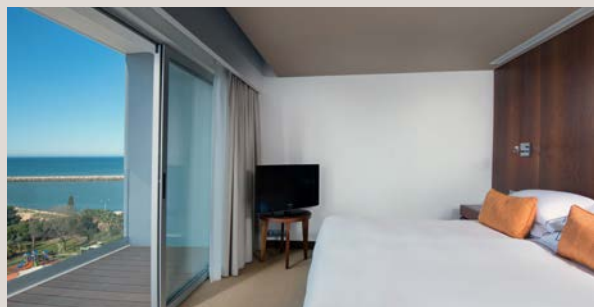
## Premium Purobeach With Sea View

Soak up more sunrays and exclusive privileges with the new Premium Purobeach with Sea View room, featuring daily access to the beach club or Purobeach Poolside (Adults only) between April and October. Enjoy a sun lounger by the pool or on the sand all day long, with special privileges such as a parasol at Purobeach Vilamoura, flip-flops and a welcome drink. Watch sundown from the Purobeach dance floor or the privacy of your room's balcony with stunning views over the sea.



## Junior Suite

These suites of around 46,5 sqm have a balcony with views of the sea and are located on floors 2 to 6. They have a double bed, separate living area and a fully equipped bathroom. Guests also have access to a safe and Nespresso coffee machine. Additionally, benefit from the exclusive offer of a "Tivoli Fusion Signature Massage" (60 minutes) with your Junior Suite booking.





## Family Junior

The Family Junior, with an area of around 79,5 sqm, has a double bed and a sofa-bed which sleeps 2. With views of the sea, is located on the 1st floor and have an exclusive deck with a lounge area. With a separate living area and a fully equipped bathroom, guests also have a free safe and a Nespresso coffee machine. Additionally, benefit from the exclusive offer of a "Tivoli Fusion Signature Massage" (60 minutes) with your Family Junior booking.



## Junior Suite With Sea View

These suites provide exclusive services including Nespresso coffee and soft drinks in the minibar (replaced daily), Internet, priority check-in and check-out and 10% off on all Tivoli Spa treatments. Located on floor 7 of the hotel, with an area of around 46,5 sqm these rooms have a double bed and a separate living area plus balconies with sea views. Additionally, benefit from the exclusive offer of a "Tivoli Fusion Signature Massage" (60 minutes) with your Junior Suite with Sea View booking.



## Vilamoura Suite With Sea View

Vilamoura Suite with Sea View boasts astonishing balcony views of gleaming Atlantic swells. Benefit from VIP treatment upon arrival including priority check-in and check-out and your choice of an excellent complimentary Tivoli experience: dinner for two at Pepper's Steakhouse with selected drinks included, a 90-minute couples Tivoli Spa treatment or sunbeds for two at Purobeach (between April and October).



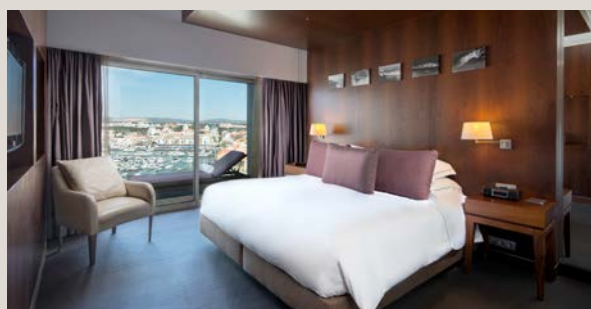
## Junior Suite Purobeach With View

Live it up with Tivoli luxury and daily access to the beach club or Purobeach Poolside (Adults only) with your stay at the Junior Suite Purobeach with View between April and October. Linger in the pool or on golden sands all day long, enjoying exclusive amenities such as a parasol at Purobeach Vilamoura, flip-flops and a welcome drink. Enjoy 10% off at Tivoli Spa to get even more joy out of coastal paradise. Additionally, benefit from the exclusive offer of a "Tivoli Fusion Signature Massage" (60 minutes) with your Junior Suite Purobeach with View booking.



## Presidential Suite With View

Seaside indulgence surpasses with the Presidential Suite and its balcony offering panoramic views of Vilamoura Marina. Take advantage of VIP treatment upon arrival and our upbeat take on resort prestige: priority check-in and check-out, a Dining Delight experience for two, a 60-minute couples treatment at Tivoli Spa or sunbeds for two at Purobeach (between April and October).



## Room Types Summary

Type of room	Room size (m2)	Bed type	Maximum room occupancy
Superior Room Marina View	31	Twin or Double Bed	3
Superior Room with Sea View	31	Twin or Double Bed	3
Deluxe Room Marina View	31	Twin or Double Bed	3
Deluxe Room with Sea View	31	Twin or Double Bed	3
Premium Room Marina View	31	Twin or Double Bed	3
Premium Room with Sea View	31	Twin or Double Bed	3
Family Room with View	49	Double Bed	4
Premium Purobeach Marina View	31	Twin or Double Bed	3
Premium Purobeach with Sea View	31	Twin or Double Bed	3
Junior Suite	46,5	Double Bed	3
Family Junior	79,5	Double Bed	5
Junior Suite with Sea View	46,5	Double Bed	3
Vilamoura Suite with Sea View	62,5	King	2
Junior Suite Purobeach with View	46,5	King	3
Presidential Suite with View	99,5	King	2

## Hotel Services

24-hour in-room dining

Complimentary Wi-Fi

Complimentary parking

Complimentary shoe shine service (on request)

Express laundry service

Sixt Rental Car Service (Office located in the Shopping Arcade)

24-hour medical assistance

Hairdresser

Shopping Arcade

Complimentary business centre

Transfers - On Request

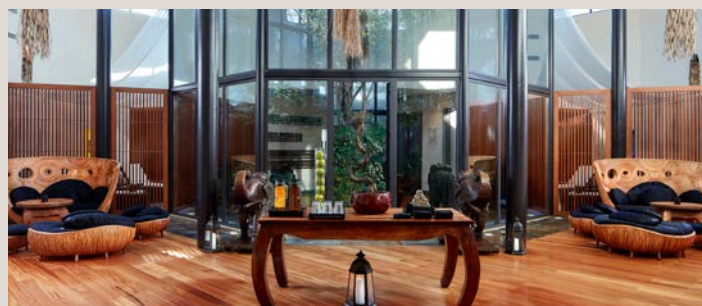
## Business Centre Services

Available 24 hours

Complimentary Wi-Fi

Complimentary ADSL line

Printer and scanner available (on request)



## Leisure Services

2 Outdoor swimming pools, including children's pool

1 Indoor heated pool

Tivoli Shape (Health Club, Jacuzzi, Steam Room and Changing Rooms)

Golf Desk (including guaranteed starting times at several courses, clinics and lessons)

Tivoli Spa Vilamoura

Purobeach Poolside

Purobeach Beachfront

Lakeside

Direct beach access

Children's playground, indoor play area and baby pantry

Babysitting services



## TIVOLI SPA VILAMOURA

Tivoli Spa Vilamoura offers elegant, refined and timeless spa experiences grounded in holistic healing. Time-honoured techniques are balanced with splendid touches, using natural raw Algarvian elements and products inspired by essences of sea and sand. Treatments never stray far from the traditional meaning of healing while capitalizing on personalized approaches, so that every guest transcends tension and emerges invigorated according to their needs.

Opening hours: 09:00 – 20:00



## TIVOLI SHAPE

Located in the heart of the Algarve, with natural day light and close to the hotel gardens, stands Tivoli Shape. Upon entering you will discover exclusive facilities, LifeFitness equipments, personal training and a private functional training room with access to the entire Tivoli Spa wellness areas: indoor swimming pool, sauna and steam room.

Opening hours: 07:00 – 21:30



## TIVOLI KIDS

Our family-friendly resort offers a range of facilities and services catered towards keeping small guests entertained. Children can play freely in their very own swimming pool or an outdoor playground and indoor play area, with organized activities offered during Carnival, Easter and Christmas holidays for ages between 4 and 12. At our baby pantry, parents have access to a microwave and fridge as well as complimentary soups, milk and water set out daily. Special menus at Chilli, Oregano and Pepper's offer simple dishes from spaghetti to chicken nuggets that big kids are sure to love. Tivoli Marina Vilamoura also offers babysitting services upon request so that parents can seek quiet time during a spa treatment, gym session or romantic dinner on the resort.



## GOLF DESK

The Algarve is renowned as a golfing mecca with 31 high-end courses across the region. Our resort is perfectly positioned in central Vilamoura among all of them, with nine championship courses within a 20-kilometre radius of the property. The Golf Desk offers premium service to all our golf enthusiasts, from guaranteed starting times at selected courses to clinics and lessons with a professional coach.

Nearby Golf Courses:

Laguna, Millennium and Victoria (0 Km)

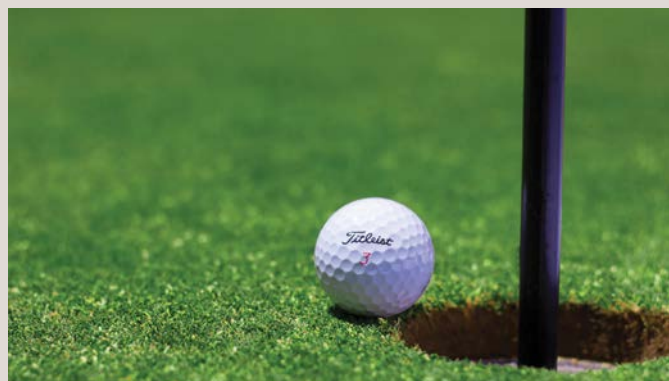
Old Course and Pinhal (1 km)

Vila Sol (6 km), Pine Cliffs (10 km)

Vale de Lobo Royal and Ocean (13 km)

Pinheiros Altos, Quinta do Lago South and North (19 km)

San Lorenzo (20 km) and Salgados (25 km)



# Restaurants & Bars

## PEPPER'S STEAKHOUSE

Cut into deep satisfaction from the grill. Slice into a perfectly seared steak. Tuck away a few fresh oysters. This restaurant overlooking the marina has everything for a fun night out, with carnivorous mains, fresh vegetables and sautéed seafood.

Opening hours: 19:00 - 22:30

Venue Capacity:

Pepper's Steakhouse Restaurant: 70 pax.

Pepper's Steakhouse Terrace: 108 pax.

Venue Banqueting Capacity:

Pepper's Steakhouse Terrace: 120 pax.



## CHILLI

Sit down at Chilli's for a meal defined by the variety of daily buffet spreads. Discover new Portuguese flavours or indulge in international comfort foods in a splendid airy atmosphere.

Breakfast: 07:30 - 10:30

Venue capacity:

Chilli I: 180pax. | Chilli II: 180pax. | Chilli Terrace: 120pax.

Venue Banqueting Capacity:

Chilli I: 180pax. | Chilli II: 200pax.

Chilli Terrace: 100pax.



## SIDEBAR

Cocktails and snacks complement beach paradise. Refuel with a stiff drink or a small bite. Sidebar is open all day and the Pepper's menu by night. Relax al fresco or indoors, with direct marina access on a panoramic elevator.

Opening hours: 10:30 - 01:00

Venue Capacity: 76 pax.

Venue Banqueting Capacity: 120 pax.



## CANELA LOUNGE BAR

Savour stunning views across the marina. Named after the Portuguese word for "cinnamon," Canela is a venue dedicated to spicing up life. Come and enjoy live music, scenic marina views and all day dining after the fairway or the beach.

Opening hours: 10:30 - 01:00

Venue Capacity: 100 pax.





## AÇÚCAR BAR

Delicious sips and tastes underscore summer. Our pool bar, open from April to October, is the perfect spot for a pick-me-up. Slip into the shade on a comfy sofa or barstool. Chess and backgammon boards are available at reception.

Opening hours: 10:30 - 19:00 (April to October)

Capacity: 57 pax.



## OREGANO

Sensational pasta, pizzas and more Italian indulgence. This casual restaurant offers a mini-Roman holiday, with homemade Italian made from the finest local produce. Pull up a seat at a wooden table and taste the seasons in leafy greens, fresh seafood and more.

Lunch: 12:00 - 18:00 (April & October)

Dinner: 19:00 - 22:30 (July & August)

Venue Capacity:

Oregano Restaurant: 120 pax.

Oregano Terrace: 140 pax.

Venue Banqueting Capacity:

Oregano Restaurant: 130 pax.

Oregano Terrace: 140 pax.



## LAKESIDE

At the glamorous Lakeside, we offer a unique setting to celebrate your event. Live a special moment. Our team will design a package tailored to your needs, ensuring at all times the highest level of service and quality to make your day unforgettable.

Venue Capacity: 1050 pax.

Venue Banqueting Capacity: 1050 pax.



## PUROBEACH POOLSIDE

Take a dip in the pool. Live it up with a relaxing massage. Order another round of Champagne and chill out surrounded by verdant greenery. Premium service and peaceful tranquility combined for the perfect summer party scenery. Drop-dead sunsets, sleek DJ beats and signature bites set the mood.

Opening hours: 10:00 - 19:00 (June - August)

Venue Capacity: 100 pax.

Venue Banqueting Capacity: 100 pax.



## PUROBEACH BEACHFRONT

Purobeach's lounge beds are the ultimate base for experiencing Algarve luxury. Indulge in your rhythms and whims with a signature menu inspired by Melbourne, Miami and Marrakesh. With our Chefs, creative flourishes promise fusion cuisine to tease the senses, using local ingredients such as fresh seafood and fish. When the sun goes down, golden sands become the dance floor with excellent DJs, alluring cocktails and rich bites to keep you moving.

Opening hours: April & May: 10:00 - 19:00

June, July & August: 10:00 - 23:00

September, October & November: 10:00 - 19:00

Venue Capacity: 100 pax.

Venue Banqueting Capacity: 120 pax.



## Leisure, Entertainment and Sports

Aquashow Park - 10-minute drive

Horse Riding Centre - 15-minute drive

Golf - various options (see Golf Desk section)

Vilamoura Tennis Academy - 8-minute drive

Casino Vilamoura - 5-minute walk





# Conferences and Meetings

Whether you're visiting us for a major corporate or a low-key meeting, our dedicated, highly experienced team is at your service. Our resort is equipped with a complete list of rooms offering state-of-the-art technology and lighting. Flexible spaces boast beautiful views over the gardens, marina and sea. The new-build Algarve Congress Centre is the premier destination for conferences, meetings and functions in southern Portugal. Modern facilities offer versatile layouts, catering to groups of all sizes. The perfect location, in central Vilamoura, promises plentiful opportunities for adventure and relaxation in the Algarve.

## SUPPORT INFRASTRUCTURES

Conference rooms equipped with the latest audiovisual technology

Reception facilities for groups

Direct access for coaches

Exclusive area for secretarial services

Lakeside - covered garden area

Hotel gardens, 2 restaurants and 3 bars

## SERVICES AVAILABLE

Wi-Fi in public areas and meeting rooms

Complimentary ADSL line in the business centre, public areas and meeting rooms

Digital signposting to guide delegates

Valet parking



## Algarve Congress Centre

### FLOOR 1 - FÉNIX

Room	L x W x H	Area (m <sup>2</sup> )	Theatre	School	Cabaret	Banquet	Cocktail Coffee Break
Fénix	31.26 x 71.73 x 10	2215	3000	1188	1120	1400	3000
I	8.34 x 28.81 x 10	242	240	132	112	140	-
II	10.85 x 28.81 x 10	307	240	132	112	140	-
III	12.06 x 28.81 x 10	347	272	132	112	140	-
IV	12.06 x 28.81 x 10	347	272	132	112	140	-
V	19.09 x 14.81 x 10	282	272	126	120	150	-
VI	19.09 x 13.90 x 10	266	254	105	96	120	-
I + II + III	31.26 x 28.81 x 10	896	808	420	336	420	-
I + II + III + VII	31.26 x 58.04 x 10	1329	1414	648	552	690	-
IV + V + VI	31.26 x 28.81 x 10	896	808	420	336	420	-
IV + V + VI + VII	31.26 x 58.04 x 10	1329	1414	648	552	690	-
Floor 1 - Foyer	58.04 x 8.71 x 7.50	583	-	-	-	-	500

FLOOR O - PÉGASO AND NEPTUNO							
Room	L x W x H	Area (m <sup>2</sup> )	Theatre	School	Cabaret	Banquet	Cocktail Coffee Break
<b>Pégaso</b>	19.50 x 21.72 x 4	420	430	210	168	208	400
I	5.38 x 8.64 x 4	46	60	30	40	50	-
II	4.24 x 8.64 x 4	37	48	27	24	30	-
III	4.29 x 8.64 x 4	37	48	27	24	30	-
IV	6.31 x 10.81 x 4	55	60	27	32	50	-
V	6.31 x 10.81 x 4	55	60	27	32	50	-
VI	4.29 x 8.64 x 4	37	48	27	24	30	-
VII	4.24 x 8.64 x 4	37	48	27	24	30	-
VIII	5.38 x 8.64 x 4	46	60	30	40	50	-
<b>Neptuno</b>	19.50 x 21.72 x 4	420	430	210	168	208	400
I	5.38 x 8.64 x 4	46	60	30	40	50	-
II	4.24 x 8.64 x 4	37	48	27	24	30	-
III	4.29 x 8.64 x 4	37	48	27	24	30	-
IV	6.31 x 10.81 x 4	55	60	27	32	50	-
V	6.31 x 10.81 x 4	55	60	27	32	50	-
VI	4.29 x 8.64 x 4	37	48	27	24	30	-
VII	4.24 x 8.64 x 4	37	48	27	24	30	-
VIII	5.38 x 8.64 x 4	46	60	30	40	50	-
Floor 0 - Foyer	50.90 x 17.29 x 4.8	742	-	-	-	-	700

TERRACES AND ROOFTOP			
Room	Area (m <sup>2</sup> )	Banquet	Cocktail Coffee Break
Rooftop	2656	2400	3500
Marina View Terrace - Floor 1	140	-	100
Ocean View Terrace - Floor 1	202	-	180
Waterfront Terrace - Floor 1	412	-	380
Pégaso Garden - Floor 0	383	-	100
Neptuno Garden - Floor 0	383	-	100

## Hotel Meeting Rooms

Room	L x W x H	Area (m <sup>2</sup> )	Banquet	Cocktail	School	Theatre	U Table	Cabaret
Aquarius	16.3 x 14.7 x 3.5	238	150	180	120	160	50	90
Gemini	15 x 26 x 3.7	390	300	400	280	480	90	180
Gemini I	15 x 8.3 x 3.7	123	80	120	100	170	40	50
Gemini I & II	15 x 17.7 x 3.7	269	200	300	180	320	66	90
Gemini II	15 x 9.4 x 3.7	146	104	150	100	180	50	50
Gemini III	15 x 8.3 x 3.7	123	80	120	100	170	40	50
Vega	7 x 20.5 x 3.2	142	—	120	110	170	50	—





## Hotel Policies

### Check-in and Early check-in

Check-in is from 15:00 onwards. Early check-in is available, subject to a surcharge: before 10:00 for the previous night's full room rate or before 14:00 for a surcharge equivalent to 50% of the previous night's room rate.

### Check-out and Late check-out

Check-out is until 12:00. Late check-out is available subject to a surcharge: For check-out between 12:00 and 16:00, the equivalent of 50% of the following night's room rate will be charged. For check-out after 16:00, that day's full room rate will be charged.

### Credit Cards

Tivoli Marina Vilamoura accepts the following credit cards: American Express, Visa, MasterCard and Diners.

### Cancellation Policy

For cancellations and no-shows, the reservation will be subject to a debit in accordance with the information provided at the point of reservation. General policies do not apply to group reservations. For reservations of 10 or more rooms, private policies apply.

#### **TIVOLI MARINA VILAMOURA ALGARVE RESORT**

Apartado 65 Marina Vilamoura,  
8125-901 Vilamoura, Portugal  
T. +351 289 303 303 · F. (+351) 289 303 345  
E. [reservations.portugal@tivolihotels.com](mailto:reservations.portugal@tivolihotels.com)  
[tivolihotels.com](http://tivolihotels.com)